

ENJOY



MOONEE
VALLEY
RACING CLUB

CORPORATE RACE DAY DINING



CONTENTS

Welcome	05
About Moonee Valley	06
MVRC map	07
MVRC racing calendar	09
Dining Boxes	11
Private Race Day Functions	13
Committee Room	15
The Cox Plate Room	16
The Lodge	19
The Saintly Suite	20
Champions	23
Silks	25
Valley View	26
Christmas time at Moonee Valley	29
Booking Information	30
Racecourse map and transportation	31





WELCOME TO 2011 MOONEE VALLEY STYLE

With impressive views of Melbourne's city skyline, Moonee Valley Racing Club offers an inspiring setting and unique opportunity for exceptional dining and entertainment. With a wide range of tailored hospitality packages at lounges and private suites - we cater for all requirements whether you are entertaining clients, rewarding your staff or planning a special evening with family and friends.



There are many stylish rooms to choose from, with a range of light-filled rooms and outdoor garden areas to suit every occasion.

With our winning combination of creativity, contemporary international cuisine and friendly service, we will ensure your event is one to remember.



ABOUT MOONEE VALLEY

Moonee Valley Racing Club is the historic home of Australia's most prestigious horse race, the Tatts Cox Plate.

It's considered Melbourne's most appealing spectator racecourse, offering an exciting, up-close and personal entertainment experience like no other. Established in 1883, Moonee Valley has enjoyed a rich and vibrant history of thoroughbred horse racing at its unique amphitheatre track and was the first Australian metropolitan track to conduct night racing.

Moonee Valley Racing Club is committed to maintaining high standards of excellence in racing and customer service. Each race meeting offers premium racing, entertainment and enjoyment throughout the year and during the Spring Racing Carnival. Our aim is to engage and excite our members and visitors about day and night racing at Moonee Valley.

The nights come alive at the Valley, where the world's best thoroughbreds, trainers and jockeys compete for over \$10 million in prizemoney and Super VOBIS bonuses. Season 15 is bigger than ever, with Group 1 racing, live entertainment, gourmet dining and the Premium Industry Rewards program.

MOONEE VALLEY RACING CLUB - RACE COURSE



<p>1</p> <p>ACCESS</p> <ul style="list-style-type: none"> • Saintry Suite Access Ground Level • Pavilion Access Ground Level • Phar Lap Dining Box 1st Floor • Tobin Bronze Dining Box 1st Floor 	<ul style="list-style-type: none"> • Kingston Town Dining Box 1st Floor • Valley View 1st Floor • Celebrity Room 1st Floor • Meeting Place 1st Floor • Inner Circle 3rd Floor 	<p>2</p> <p>ACCESS</p> <ul style="list-style-type: none"> • Deck Bar Ground Level • Octagonal Lounge Ground Level • Members' Jockey Bar 2nd Floor • Members' Concourse 2nd Floor • Silks 2nd Floor • Committee Room 4th Floor • Champions Access Ground Level <p>3</p> <p>ACCESS</p>	<ul style="list-style-type: none"> A Cheval Chalets B Cheval Chalet Corporate Enclosure C Nova Enclosure D Legends Lane (Fields of Omagh) E North Hill (Northerly) (Cox Plate Start) F South Hill
--	--	---	---



MOONEE VALLEY RACING CALENDAR 2011/2012

DATE	RACE	DAY/NIGHT
2011		
Wednesday 8 June	Free Entry	Mid-week Day Racing
Saturday 18 June	Winter Racing	Day Racing
Saturday 2 July	Winter Racing	Day Racing
Saturday 20 August	Mitchell McKenzie / William Crockett Stakes	Season Opener
Saturday 10 September	Tatts Cox Plate Preview Day	Day Racing
Friday 30 September	Sportingbet Manikato Stakes	Night Racing Season Launch
Friday 7 October	Friday Night Meeting	Night Racing
Saturday 22 October	Tatts Cox Plate	Day Racing
Friday 28 October	Friday Night Meeting / Derby Eve	Night Racing
Friday 11 November	Friday Night Meeting	Night Racing
Saturday 19 November	Day Meeting	Day Racing
Friday 25 November	Friday Night Meeting	Night Racing
Friday 2 December	Christmas at Moonee Valley	Night Racing
Friday 9 December	Christmas at Moonee Valley	Night Racing
Sunday 11 December	Twilight Meeting	Twilight Racing
Friday 16 December	Christmas at Moonee Valley	Premium Night Racing
Saturday 31 December	New Year's Eve	Premium Night Racing
2012		
Friday 13 January	Friday Night Meeting	Night Racing
Friday 27 January	Australia Stakes	Premium Night Racing
Friday 3 February	Friday Night Meeting	Premium Night Racing
Friday 10 February	Friday Night Meeting	Night Racing
Friday 17 February	Friday Night Meeting	Night Racing
Friday 24 February	MVRC Night Cup	Premium Night Racing
Friday 2 March	Friday Night Meeting	Premium Night Racing
Monday 12 March	Labour Day	Day Racing
Friday 16 March	Top Cut Alister Clark Stakes	Premium Night Racing
Friday 23 March	William Reid Stakes	Premium Night Racing
Saturday 31 March	Day Meeting	Day Racing
Wednesday 6 June	Free Entry	Mid-week Day Racing
Saturday 16 June	Winter Racing	Day Racing
Saturday 30 June	Winter Racing	Day Racing

*Racedates subject to change.



DINING BOXES

Select from Moonee Valley's luxurious dining boxes ideally located on the home straight for superb racecourse viewing, nothing delivers a better racing atmosphere. These stunning syndicated boxes can accommodate tables of 2, 4 & 6.



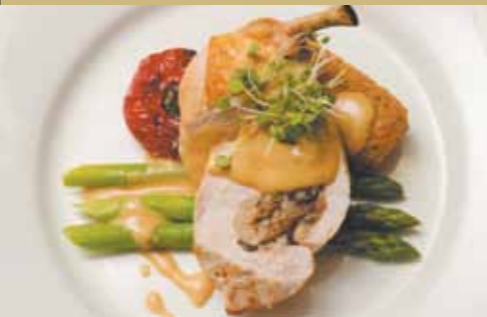
DINING BOXES

- Three-course set menu or A La Carte menu
- Racecourse admission
- Race book
- Reserved table
- Cash bar facilities
- Waiter service
- Tote facilities
- Freshly brewed coffee & tea with chocolate



PRIVATE RACE DAY FUNCTIONS

Moonee Valley offers a selection of 15 light-filled rooms and outdoor garden areas to suit every occasion, from the large and spacious to the small and intimate and anywhere in between.



Our versatile entertaining and dining spaces can accommodate for an intimate gathering of 40 seated guests, up to 2000 guests for a cocktail event and up to 5000 guests for an exhibition in our versatile indoor and outdoor spaces.

Enjoy stunning views of the racecourse and superb outlooks of Melbourne's city skyline.



COMMITTEE ROOM

Guaranteed to impress, the prestigious Committee Room occupies the top level of the main grandstand and commands a panoramic view of the Melbourne skyline as well as the racecourse itself.



COMMITTEE ROOM

- Located on level four adjacent to the winning post.
- Spectacular racecourse and city views.
- Private foyer for pre-function drinks or registration.
- Private outdoor terrace with access to grandstand seating.
- Private tote for guests.
- Full bar facilities.
- Private bathroom facilities.

STYLE	MAX	MIN
Sit down	280	160
Buffet	260	160
Cocktail	400	200

THE COX PLATE ROOM

Situated on the South Hill and featuring panoramic views of the entire racecourse, the Cox Plate Room is the most coveted function venue at Moonee Valley.



THE COX PLATE ROOM

- Large private dining area located on the South Hill featuring panoramic views.
- Floor to ceiling glass windows.
- Private tote for guests.
- Full bar facilities.
- Private bathroom facilities.

STYLE	MAX	MIN
Sit down	80	50
Buffet	72	50
Cocktail	100	80





THE LODGE

The Lodge is a truly unique location at Moonee Valley. Majestically located on the South Hill. The Lodge, with its floor to ceiling glass windows, offers a stunning vantage point to enjoy day or night races.



THE LODGE

- Located on the South Hill.
- Stunning views of the home straight and the entire racecourse.
- Private tote for guests.
- All tables offer un-interrupted views of the racetrack.
- Tiered level to maximise viewing.
- Full bar facilities.

STYLE	MAX	MIN
Sit down	111	70
Buffet	93	70

THE SAINTLY SUITE

The Saintly Suite's smaller size makes it the perfect venue for intimate tiered dining. Centrally located, the Saintly Suite boasts stunning views of the racecourse including the home straight.



THE SAINTLY SUITE

- Tiered dining arrangement.
- Centrally located on the home straight.
- Private tote for guests.
- Full bar facilities.
- Individual TV monitors on each table.

STYLE	MAX	MIN
Sit down	64	40
Buffet	48	40
Cocktail	65	40





CHAMPIONS

Champions has a warm and inviting quality that is located on the mezzanine level over looking the home straight.

CHAMPIONS RESTAURANT

- Located on the mezzanine level of the grandstand.
- Stunning views of the home straight.
- Private tote for guests.
- Full bar facilities.
- Individual TV monitors on each table in the tiered section.
- Private bathroom facilities.

STYLE	MAX	MIN
Sit down	330	130
Sit down (incl South)	460	200
Buffet	250	130
Cocktail	500	180

CHAMPIONS RESTAURANT SOUTH

- Located on the mezzanine level of the grandstand.
- Private tote for guests.
- Full bar facilities.
- Individual TV monitors on each table.
- Stunning views of the home straight.
- Private bathroom facilities.

STYLE	MAX	MIN
Sit down	66	60
Buffet	66	50
Cocktail	120	80



SILKS

The brilliant colours of the replica silks that line the walls create the ideal setting for lively gatherings and racing-themed parties. The Silks room is an impressive area for entertaining guests.



SILKS

- Private tote for guests.
- Full bar facilities.
- Private bathroom facilities.
- Located on level 2 adjacent to the Members Concourse.

STYLE	MAX	MIN
Sit down	120	60
Buffet	100	60
Cocktail	200	60

VALLEY VIEW

Valley View is a light-filled and spacious area with, as its name implies, an eye-catching outlook through the floor-to-ceiling windows. Up here both the racing action and the city skyline create a great atmosphere. A perfect place for great day or night entertaining.



VALLEY VIEW

- Located on level 1 next to the Celebrity Room.
- Stunning panoramic views of the racecourse.
- Private tote for guests.
- Full bar facilities.

STYLE	MAX	MIN
Sit down	300	150
Buffet	260	150
Cocktail	400	150





CHRISTMAS TIME AT THE VALLEY

There are many great dining options on offer to ensure you'll enjoy a memorable and festive experience tailored to your budget. Moonee Valley comfortably caters for every type of Christmas party imaginable, whether it's a dinner in one of our many dining rooms or a function for up to 400 guests.

Experience the excitement of thoroughbred racing for your 2011 Christmas celebration. At Moonee Valley, you can view all the action of day or night races from an amazing vantage point in the grandstand, while enjoying quality food, beverages and service.

It's definitely the most exciting place to be for your raceday Christmas party. Be sure to secure your Christmas celebration now.



PACKAGES INCLUDE

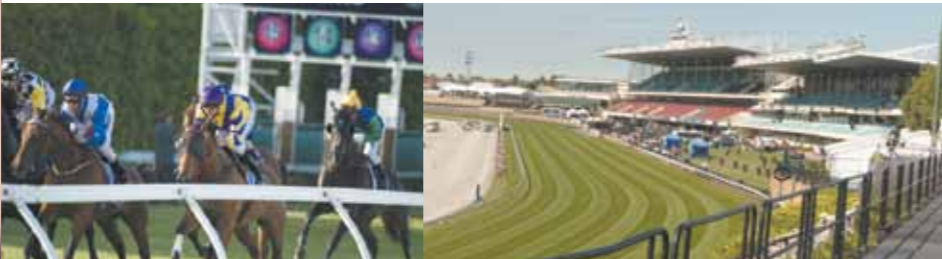
- A range of buffets, cocktail and set menus, including premium beverages
- Room hire and Christmas theming
- Waiter service

*A minimum of 40 guests are required for private functions
Prices from \$117 per person



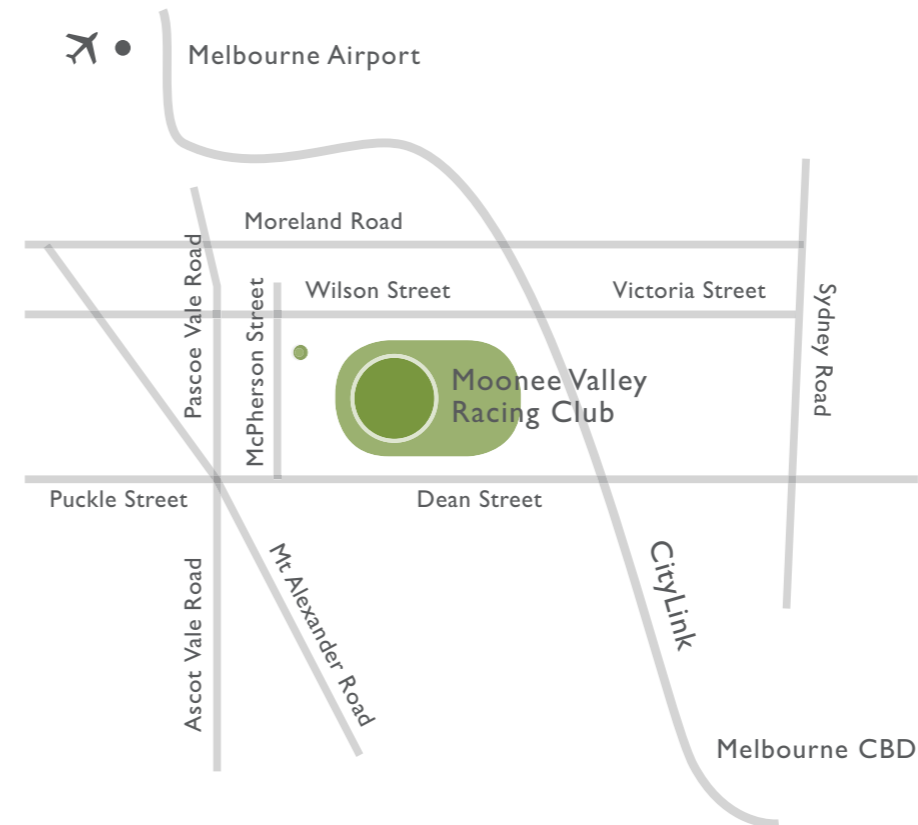
BOOKING INFORMATION

At Moonee Valley, we aim to provide a unique and inspiring setting for conferences and corporate events. With innovative meeting facilities, flexible spaces and exceptional catering, we help to make your conference a successful and hassle-free event.



For more information or to make a booking, please contact:
MVRC Corporate Sales on 1 300 67 23 00
or email valleyevents@mvr.net.au

MOONEE VALLEY RACING CLUB - RACE COURSE DIRECTIONS



Moonee Valley Racing Club
McPherson Street,
Moonee Ponds 3039

HOW TO GET THERE

CAR

Refer to Melway map reference 28 K5.

TRAIN

Craigieburn line from Flinders St Station, stops at Moonee Ponds Station. MVRC is a 10 minute walk down Puckle St.

TRAM

No. 59 tram from Elizabeth St arrives directly at Moonee Ponds junction. MVRC main entrance is a 200m walk.

TAXI

A taxi rank is located on McPherson St, Moonee Ponds.

TERMS & CONDITIONS General terms and conditions are available at www.mvr.net.au or by contacting Customer Service on 1300 79 79 59. You agree to and will abide by those terms and conditions. Your booking is subject to availability. MVRC reserves the right to refuse to sell or supply corporate packages to any company or individual.
AGREEMENT A binding agreement is effective upon receipt of full payment. **PAYMENT DATE & CONDITIONS** All bookings in excess of \$5000 paid for by credit card incur an additional booking fee of 2%. All bookings must be paid for in full within 14 days of the booking date. **ADMISSION TICKETS** MVRC does not take any responsibility for lost or stolen admission tickets. Please keep a record of the printed number on each ticket. No admission tickets will be issued until full payment is received and all funds are cleared. **USE OF FACILITY** Attendees are not permitted to supply their own food and beverages. Moonee Valley Racecourse adopts the responsible service of alcohol policy. **ON-SELLING** You are not permitted to sell or on-sell any part of your facility without the prior approval of MVRC.



Moonee Valley Racing Club
T 1300 67 23 00 E valleyevents@mvrc.net.au
Moonee Valley Racecourse, McPherson Street,
Moonee Ponds Melbourne Vic 3039
mvrc.net.au